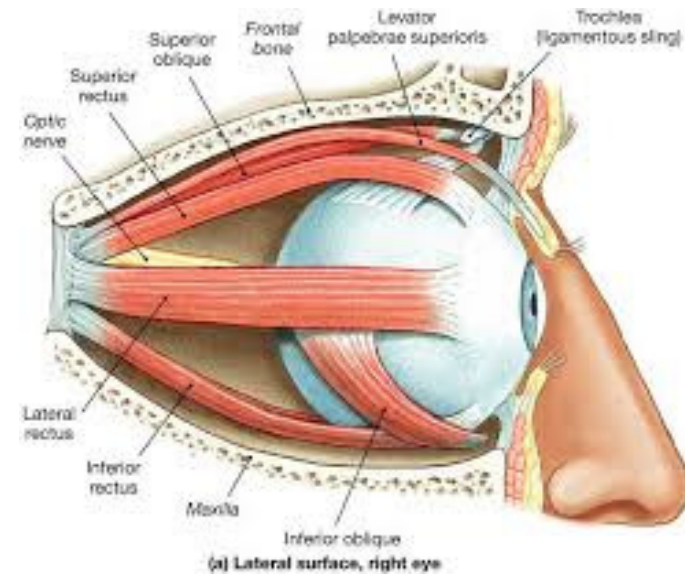


Visual System

Melody Leung

Human eyeball

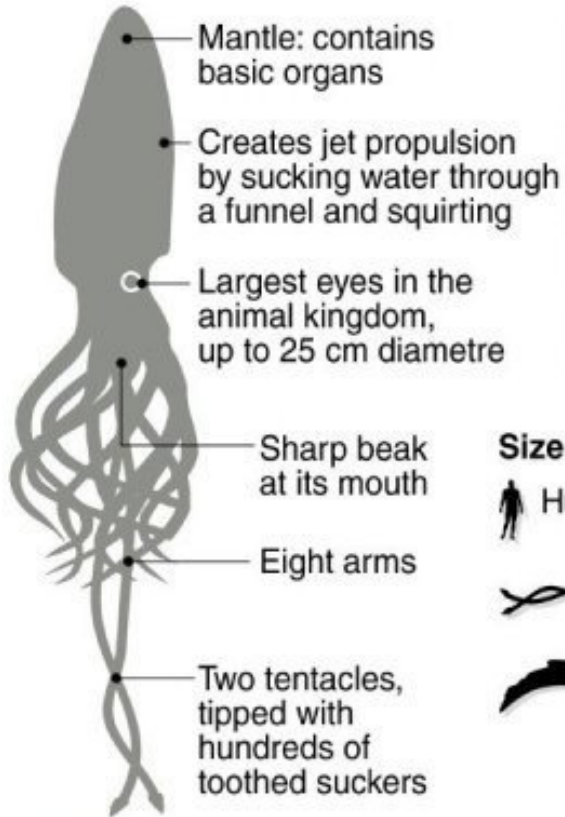


The typical adult eye has an anterior to posterior diameter of ~ 2.5 cm, a volume of 6ml and a mass of 7.5g.

The eyeball grows rapidly, increasing from about ~ 1.6 cm at birth to ~ 2.3 cm by three years of age. By age 13, the eye attains its full size.

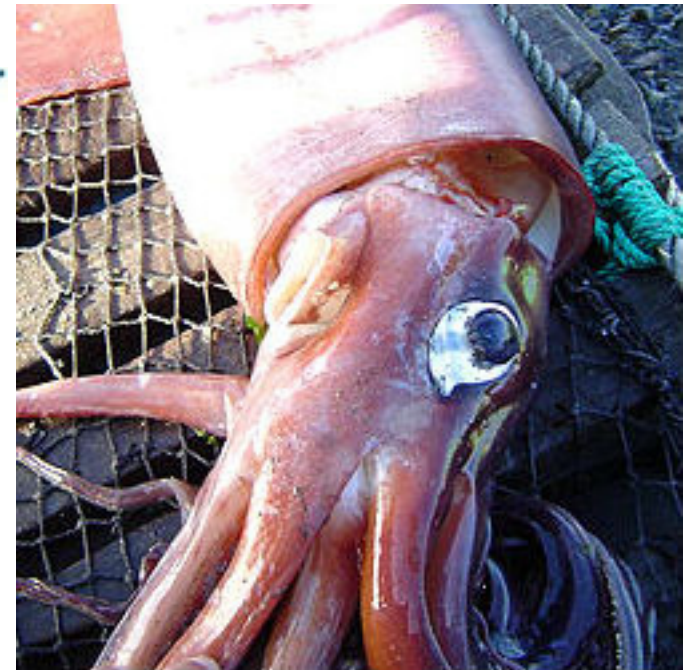
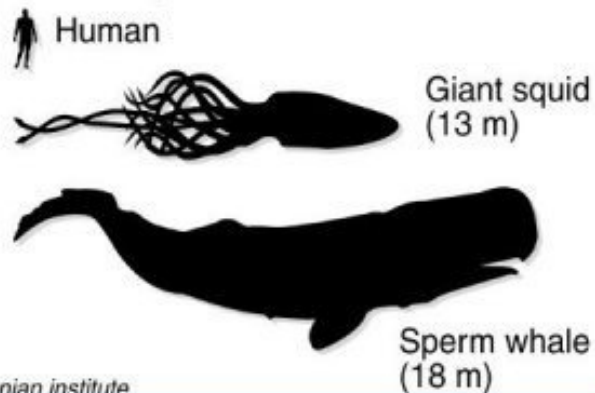
Giant squid

Architeuthis, one of the “last mysteries of the ocean”

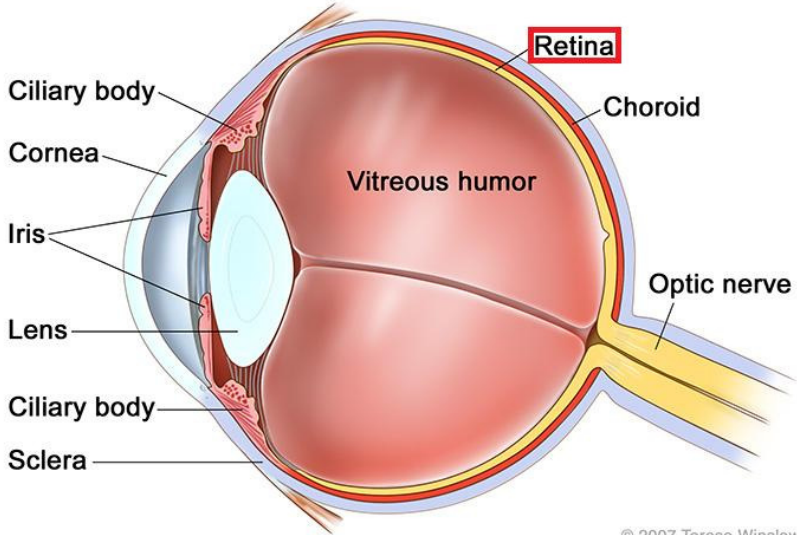


- Carcasses have been found all over the world
- Largest recorded: 16-18 metres
- Hunted by sperm whales
- Feed on deep water fish, other squid

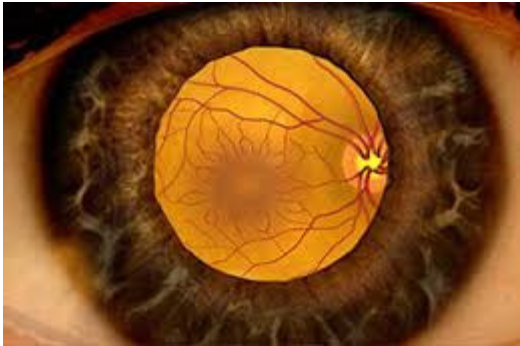
Size comparison



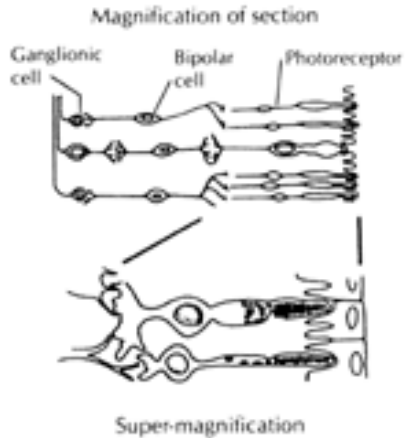
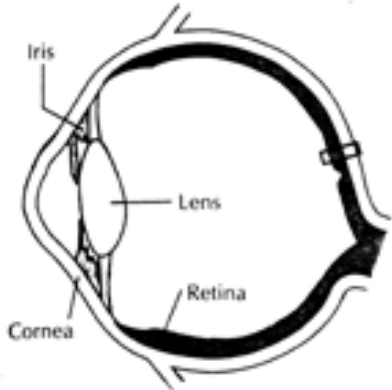
Retina structures



© 2007 Terese Winslow
U.S. Govt. has certain rights



Human eye



Squid eye

